

WHY REUSE OUR WASTE WATER?

KEY FIGURES



50%

of groundwater is in "poor quality status"

+ 2°C
by 2050



23rd

country suffering the most drought (out of 164)



20 to 40%

less flow in our rivers by 2050

34%

Water from outside the country

WATER CONSUMPTION IN BELGIUM



55%

Energy production



32%

Industries



10%

Domestic uses



3%

Agriculture

FOCUS EUROPE

6.6 BILLION M³ REUSE/YEAR

objective of the European Commission

REUSE OF INDUSTRIAL WATER

KEY FIGURES

20% OF WATER
withdrawn for industry in Belgium



25

liters of water

for 1L of beer

10

liters of water

for 1L of milk

1700

m³/an of water

for 1 ha of potatoes

FOCUS ON VEOLIA WATER TECHNOLOGIES BELGIUM



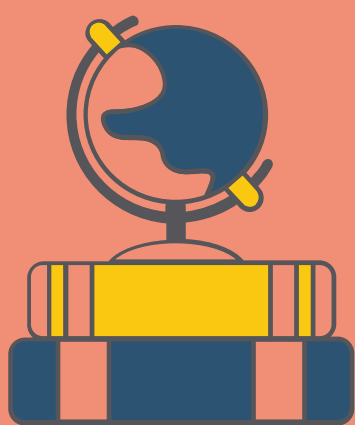
+ than 30

industrial water reuse technologies



35

employees



+50

references in Belgium

+20 YEARS

of experience in the industry